

# **Planning and Regeneration**

**Service Profile, Efficiencies and  
Service Development/Improvement Ideas for  
Business Scrutiny @ 14-1-10**

**Marc Dorfman**

**@ 7-1-10**

# SERVICE AIMS & PURPOSE

## WHAT...

- PLACE & BUILDING PLANNING:
  - tangible progress towards liveable, well designed, safe, sustainable places (neighbourhoods and town centres), that are land and energy efficient
- ANTI CLIMATE CHANGE:
  - tangible progress towards mitigating and adapting to climate change
- REGENERATION:
  - tangible progress towards places and communities that are economically competitiveness, fair and socially inclusive

## HOW..

- INTEGRATED PLANNING and SERVICE DEVELOPMENT:
  - more corporate and more delivery focused;
  - fewer strategies/better focused, (SCS/LDF and integrated PI monitoring);
  - stronger community engagement/dialogue/information/feedback and communication tools;
  - strong community infrastructure planning; stronger housing investment and development planning – and North London/sub regional planning and delivery;
  - staff and member development in building and urban design; development feasibility; sustainable development and construction; transport design and management;
  - stronger focus on service excellence through benchmarking; value for money; New Ways of Working, (including shared services)

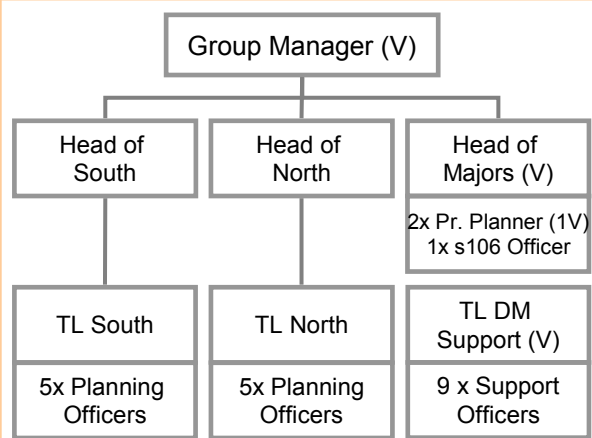
# Haringey Planning & Regeneration Structure

Existing Oct 2009

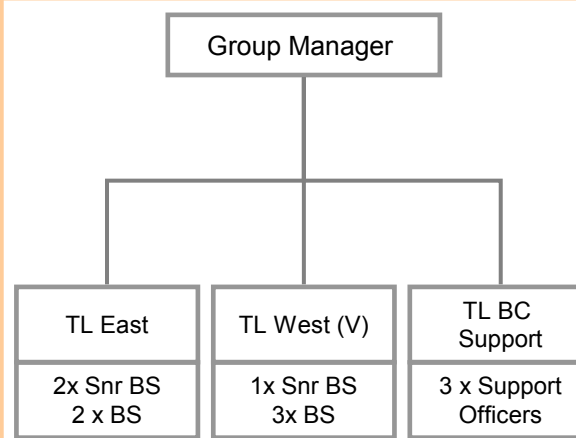
## AD Planning & Regeneration

PA

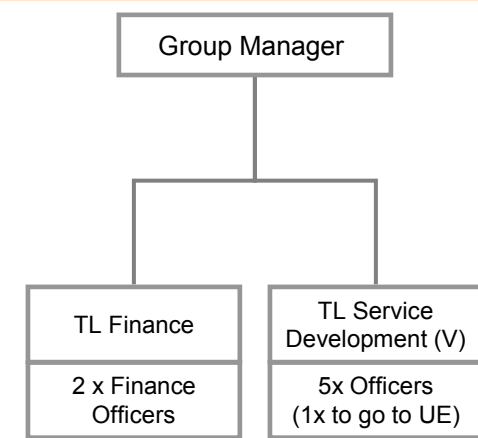
### Development Management



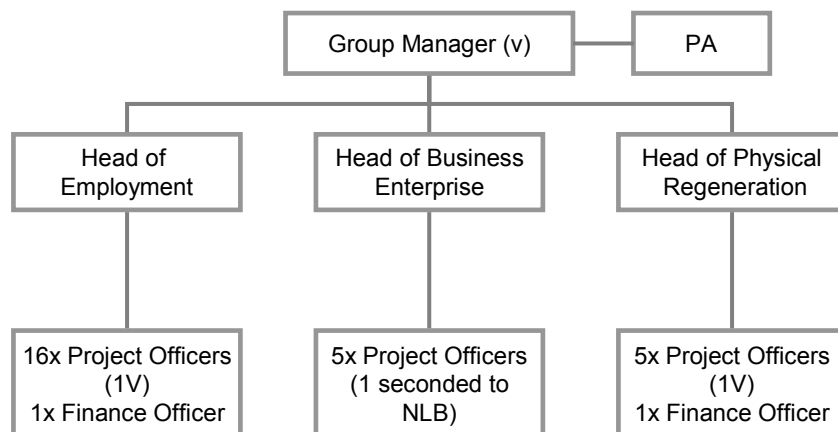
### Building Control



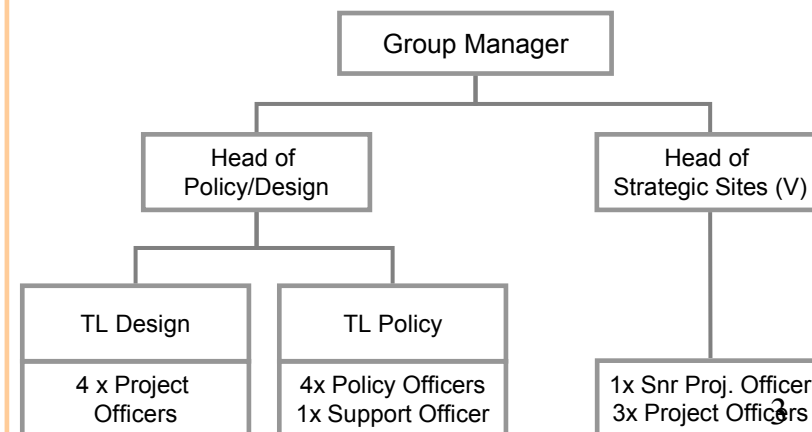
### Service Management



### Regeneration



### Planning Strategy & Sites



# Planning & Regeneration Service – Key Functions

<b>Asst Director Planning and Regeneration</b>					
<b>Business Support</b>					
<b>Development Management &amp; Building Control</b>		<b>Policy</b>		<b>Regeneration</b>	
<b>Development</b>		<b>Building</b>			
<b>2</b>		<b>3</b>		<b>1</b>	<b>4</b>
<b>Advise on the control development</b>		<b>Make sure development is built well</b>		<b>Make policy and plans for the Borough</b>	<b>Action on critical projects</b>

# Planning & Regeneration Service – What we do...?

<b>Asst Director</b>						
<b>Business Support</b> – Service Plan; Performance Management; PIs; Statements of Control; Finance						
<b>Development &amp; Building Control</b>		<b>Policy</b>	<b>Regeneration</b>			
Development		Building Control	Plans, Design & Environment	Projects; Skills; Enterprise; Area Management		
-Permitted Development		<b>-Full Plans</b>	<b>- Major Projects, Planning Briefs, Area Plan and Partnerships</b>  <b>-Plan for Borough</b>  <b>-Design, Conservation &amp; Trees</b>  <b>- Climate Change</b>	<b>- Major Projects, Planning Briefs, Area Plan and Partnerships</b>  <b>-Town Centre /Business Networks Coordination</b>  <b>- Employment and Skills/Business Advice</b>  <b>- Promotion and External Funding</b>		
-Planning Applications		<b>-Building Notices</b>				
-Advert Consents		<b>- Regularisation</b>				
- Conservation/Listed Building Consent		<b>-Dangerous Structures</b>				
-Planning Appeals		<b>- Stadium Safety</b>				
- (Enforcement)						
Planning Cttee Conservation/Design Advice Panels Scrutiny and Cabinet		<b>Scrutiny and Cabinet</b>	<b>Scrutiny and Cabinet</b>	<b>Scrutiny, Cabinet</b>		

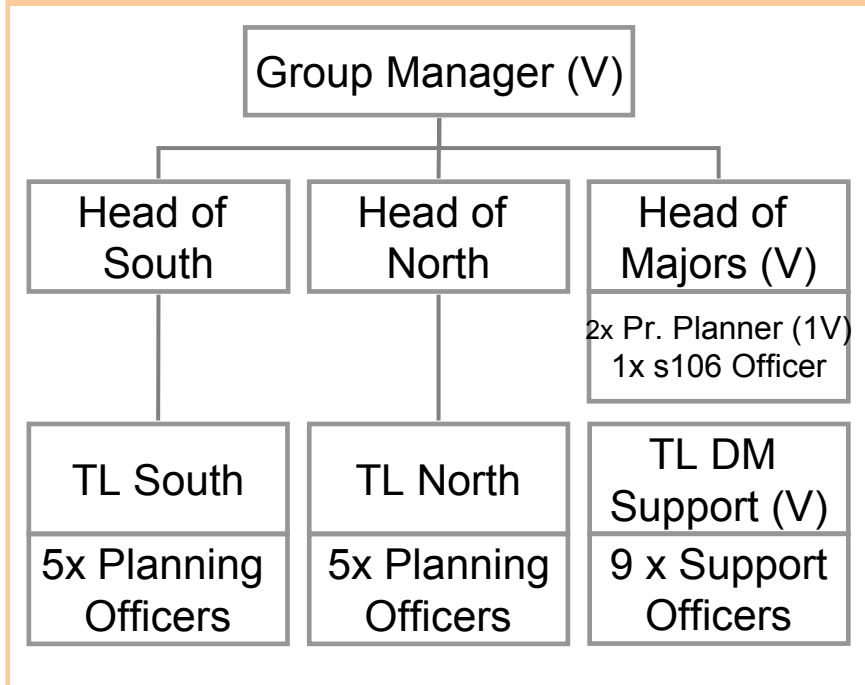
# Planning & Regeneration Service – How much work we do?..

<b>Asst Director</b>				
Councillor and Delegated Decisions; £6m turn over ; 105 professional and service staff; Service Plan and Development; Customer Service; 2-3000 Development Decisions; 2000 Building Decisions;				
<b>Development &amp; Building Control</b>		<b>Policy</b>	<b>Regeneration</b>	
<b>Development</b>	<b>Building</b>	Plans; Design & Environment; Major Projects	Major Projects; Skills/Employment; Enterprise; Town Centres Management & Promotion	
<p><b>2- 3000 decisions/ recommendations pa</b></p> <p><u>Assessments:</u></p> <ul style="list-style-type: none"> <li>•public consultation</li> <li>•good design</li> <li>• parking and servicing</li> <li>•no significant loss of neighbouring amenity ;</li> <li>•the right mix of land uses and</li> <li>•in the right location</li> <li>• conditions/planning obligations</li> </ul>	<p><b>2000 decisions/ recommendations pa</b></p> <p><u>Assessments:</u></p> <ul style="list-style-type: none"> <li>• well built</li> <li>• built safely</li> <li>• conserves energy</li> <li>• disabled access</li> <li>• emergency access</li> </ul>	<p><b>-Public consultation and councillor decisions</b></p> <p>-Plan for Borough</p> <p>-Area Plans</p> <p>-Planning Briefs</p> <p>-Design, Conservation &amp; Trees</p> <p>-Climate Change</p> <p>- Major Projects, Promotion and External Funding</p>	<p><b>- Public consultation and councillor decisions</b></p> <p>-Town Centre Management</p> <p>- Employment and Skills/Business Advice</p> <p>- Major Projects, Promotion and External Funding</p>	

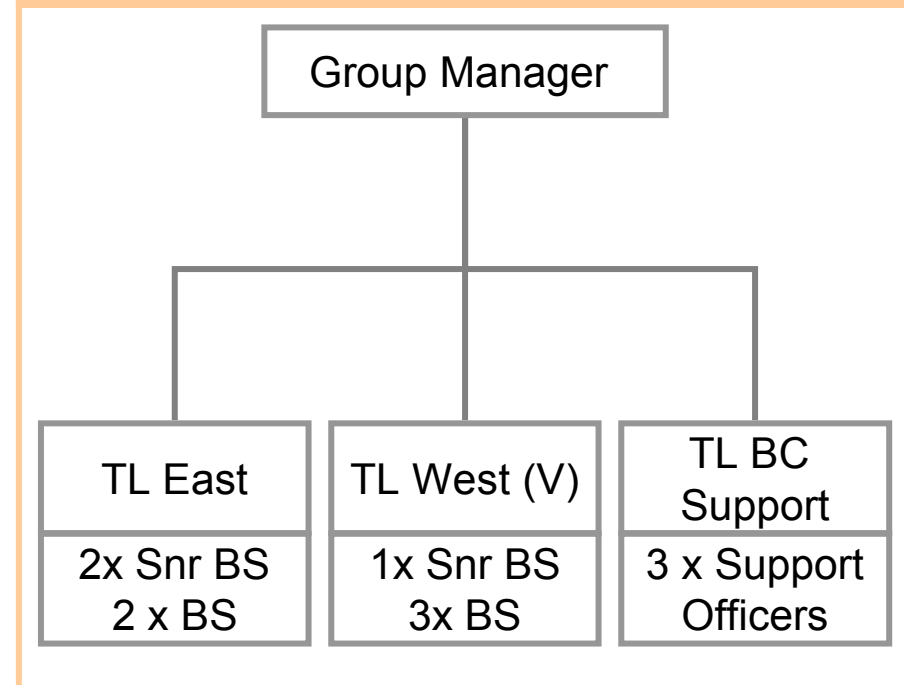
## Planning & Regeneration Service – Our Qualifications and Training

<b>AD Planning &amp; Regeneration</b>					
<b><u>Service Development/IT</u> : Vocational Qualification; GCSE/A levels; Degree</b>					
<b>Development</b>			<b>Policy</b>		<b>Regeneration</b>
<u><b>Development Control</b></u> •Vocational Qual. •GCSE/A levels •Degree/CPD  •Geography •Economics/Business •Social Sciences • Environmental Sciences •Design •Building •Architecture •Chartered Surveyor •Landscape/Trees		<u><b>Building Control</b></u> •Vocational Qual. •GCSE/A levels •Degree/CPD  •Building Engineering •Chartered Surveyor	<u><b>Policy &amp; Research</b></u>  <u><b>Major Projects</b></u>  <u><b>Urban Design</b></u>  <u><b>Environment</b></u>  <u><b>Trees</b></u>  (See Development Control)		<u><b>Major Projects</b></u>  <u><b>Enterprise Employment &amp; Skills</b></u>  <u><b>Town Centres</b></u>  <u><b>Promotion</b></u>  (See Development Control)

## Development Management



## Building Control





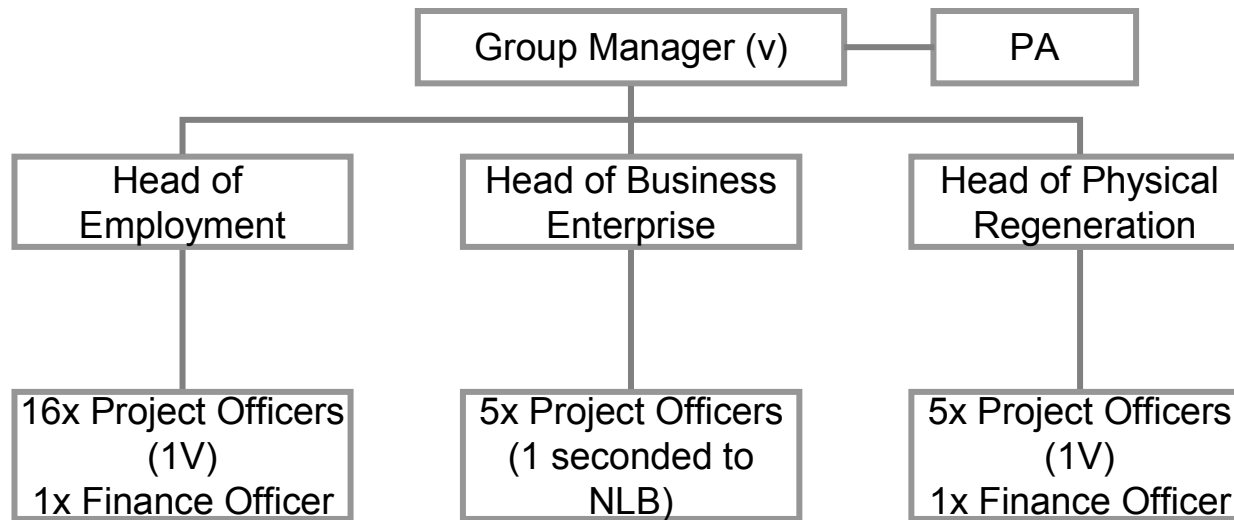
## **Development Management**

- Appoint Team Leader DM Support
- Put Major Projects back into the Area teams, keep S106 officer
- Consider Planning Enforcement service location
- Consider merge DM/BC – “GM Sustainable Development and Commissioning”
- Integrate Admin IT/process systems and support staff
- Develop support staff to deal with householder applications and straight forward service requests

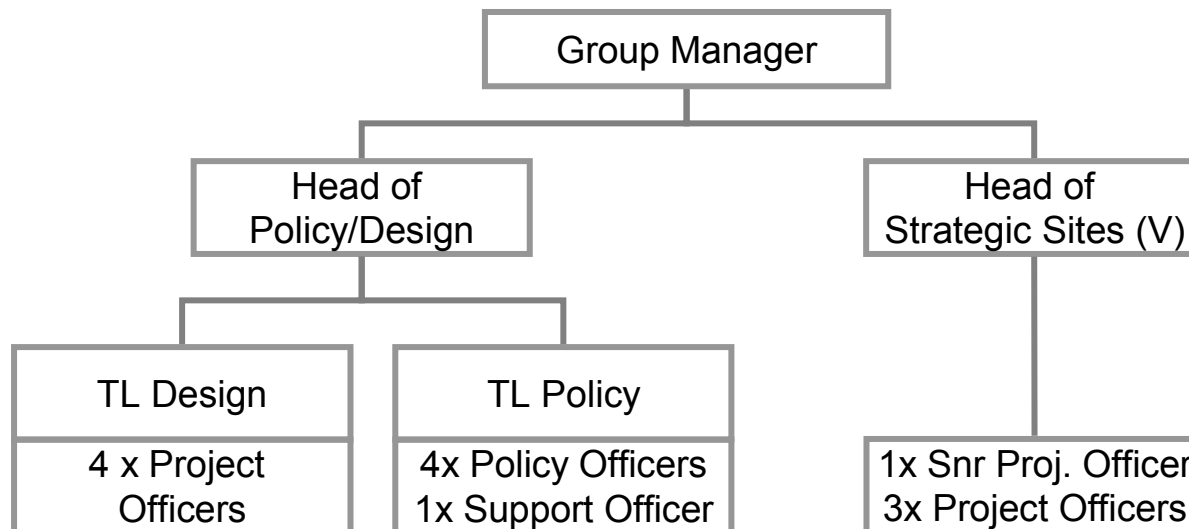
## **Building Control**

- Maintain Team Leader Support same as in DM
- Maintain 2 Area Team Leaders as in DM
- Consider merge DM/BC - “GM Sustainable Development and Commissioning”
- Integrate Admin IT/process systems and support staff
- Develop support staff to deal with householder applications and straight forward service requests

## Regeneration



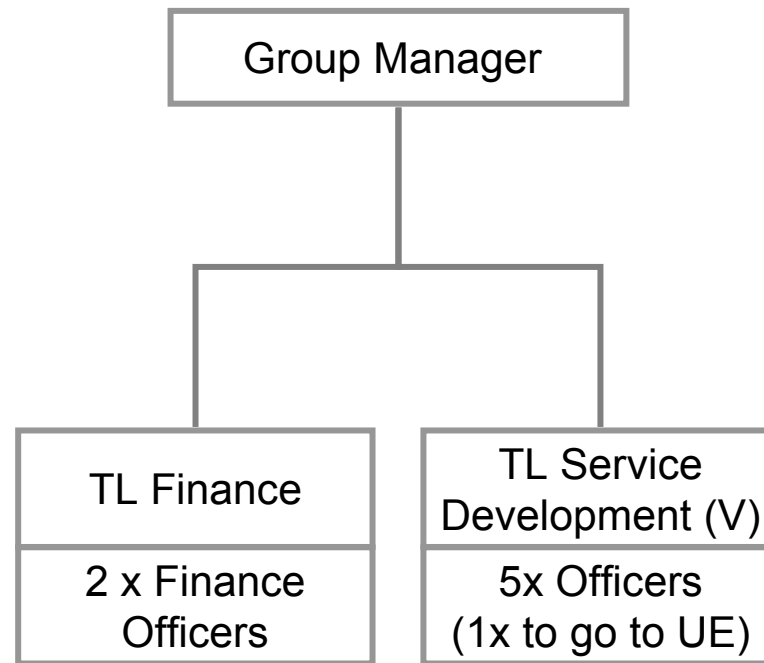
## Planning Strategy & Sites



## **Planning Policy and Regeneration**

- Consider merge Physical Regeneration and Sites Teams
- Review functions of Enterprise/Employment and Skills Teams
- Consider merge Policy and Regeneration – “GM Sustainable Communities and Commissioning”
- Consider outsourcing “Business and Enterprise” or refocus on key essential services to compliment Business Link
- Consider developing and marketing “Employment and Skills” because of future new opportunities
- Integrate Finance/Admin IT/process systems and support staff

## Service Management



## **Service Management**

- Integrate Finance/Admin IT/process systems and support staff
- UE Back office review of staff/functions/capacity on going.